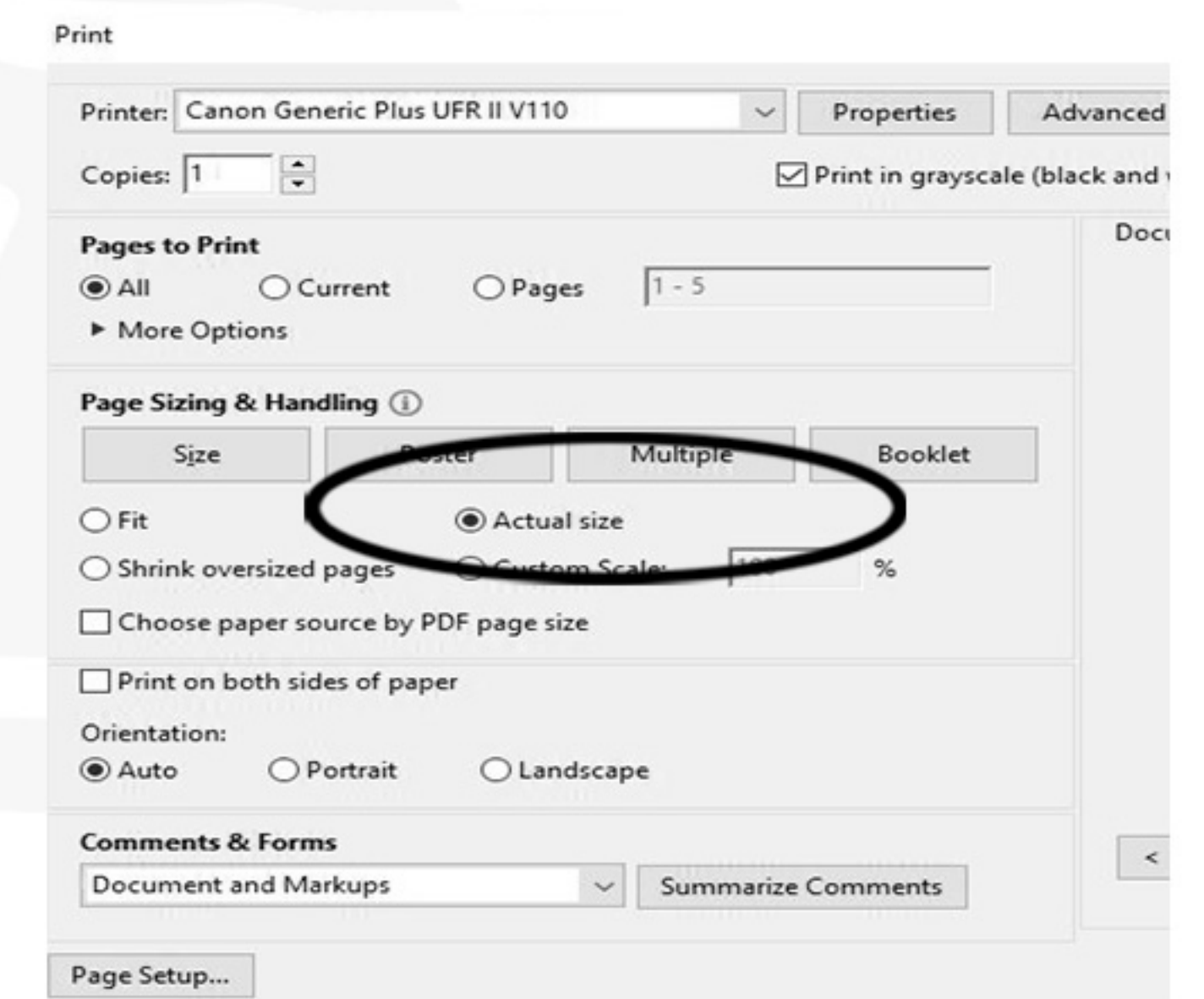


Upper Trunk Liner Template

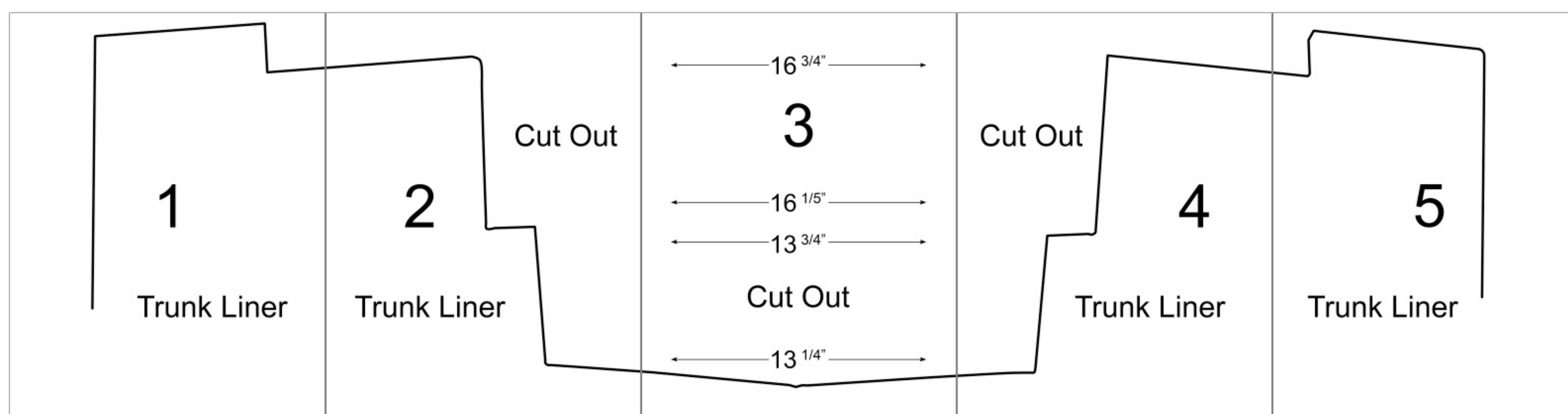
VW Super Beetle 1971-72 (cut out for US fresh air box)



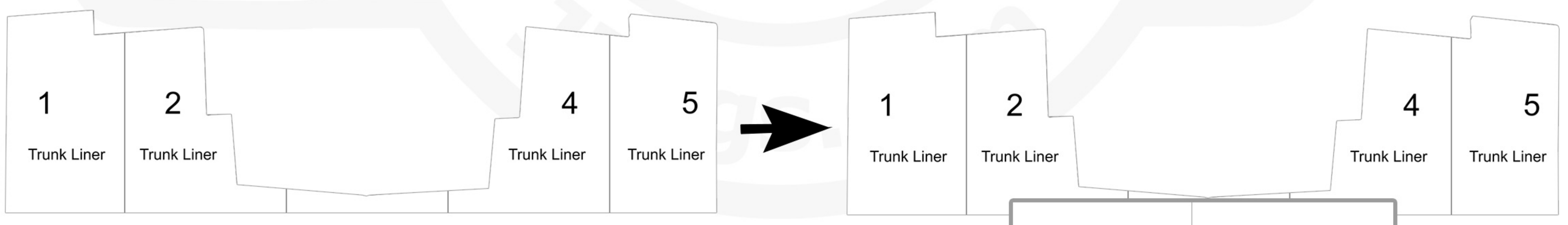
- 1) This template is made to print on 8.5" X 11" sheets of paper. When printing please make sure page sizing is set to "Actual Size". Shrunk or scaled printings will skew the patterns dimensions and the template will NOT be accurate.



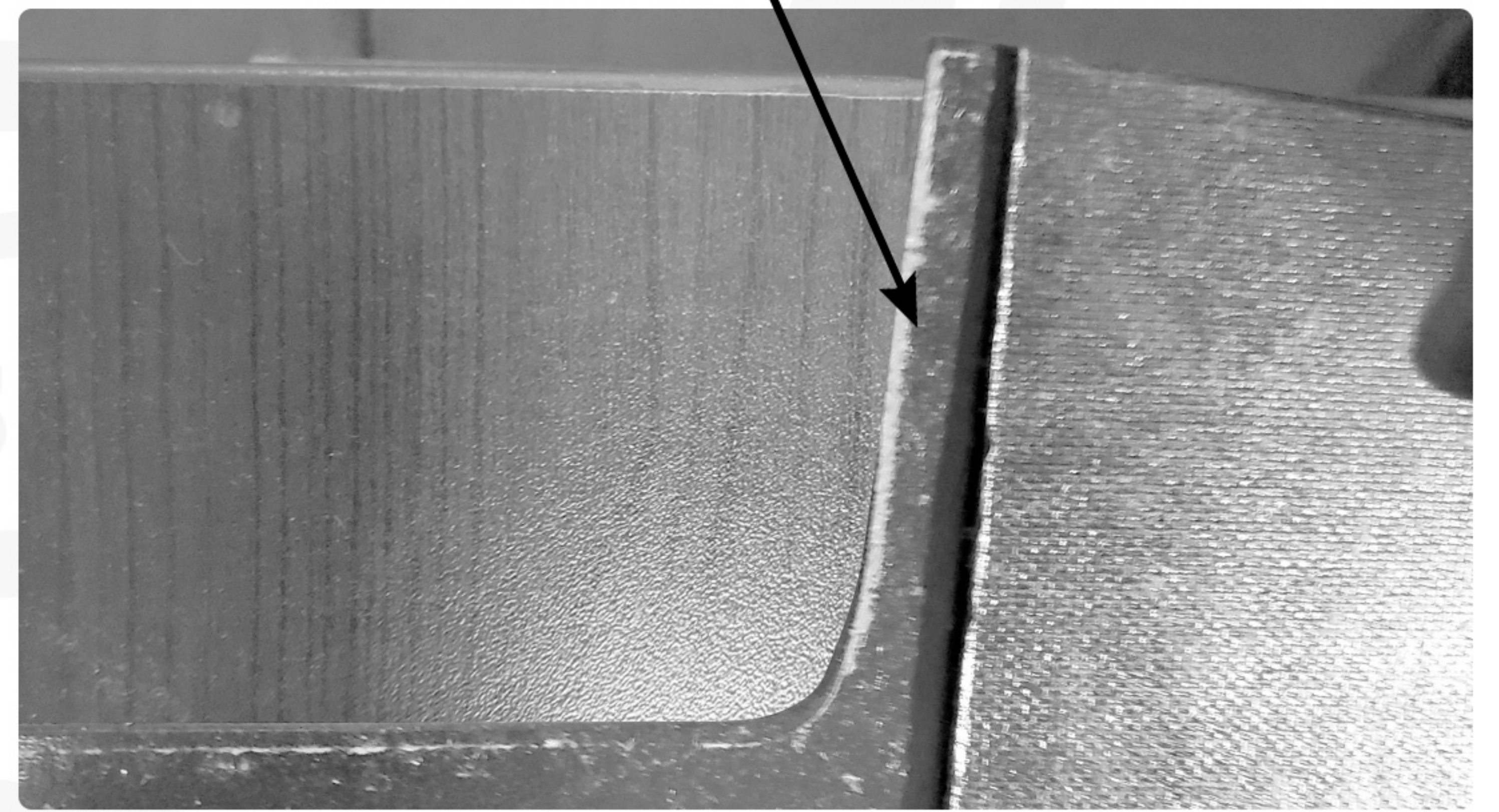
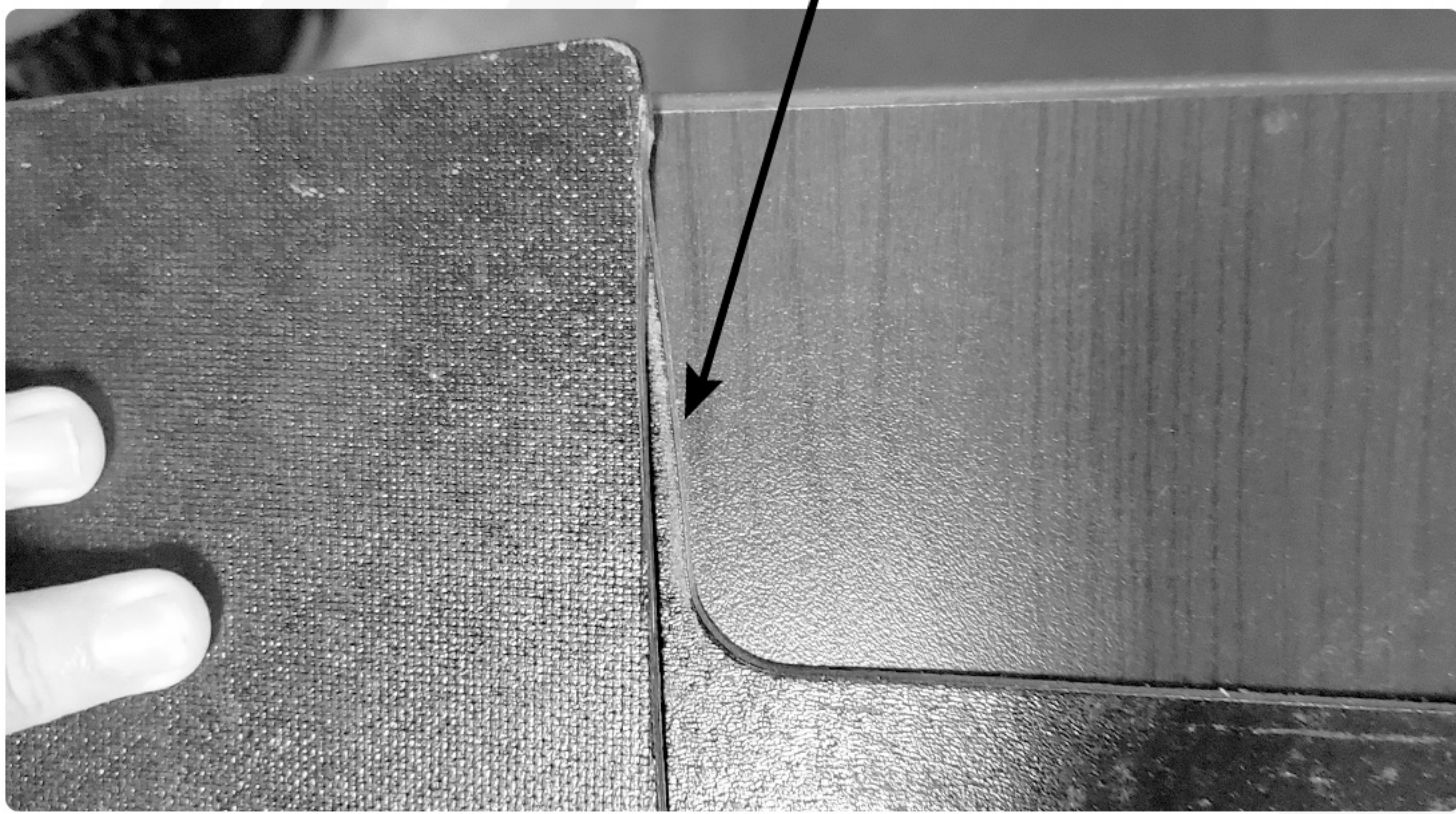
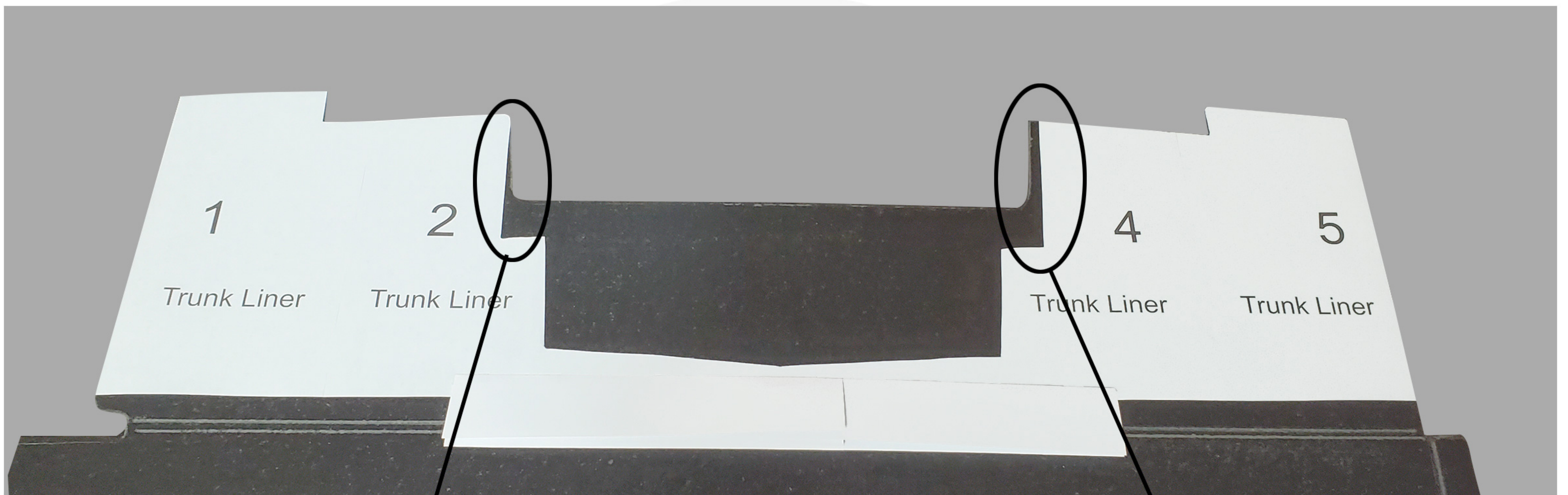
- 2) Print and arrange pages in numerical order. Align pages edge to edge (do not overlap the pages) then tape together.



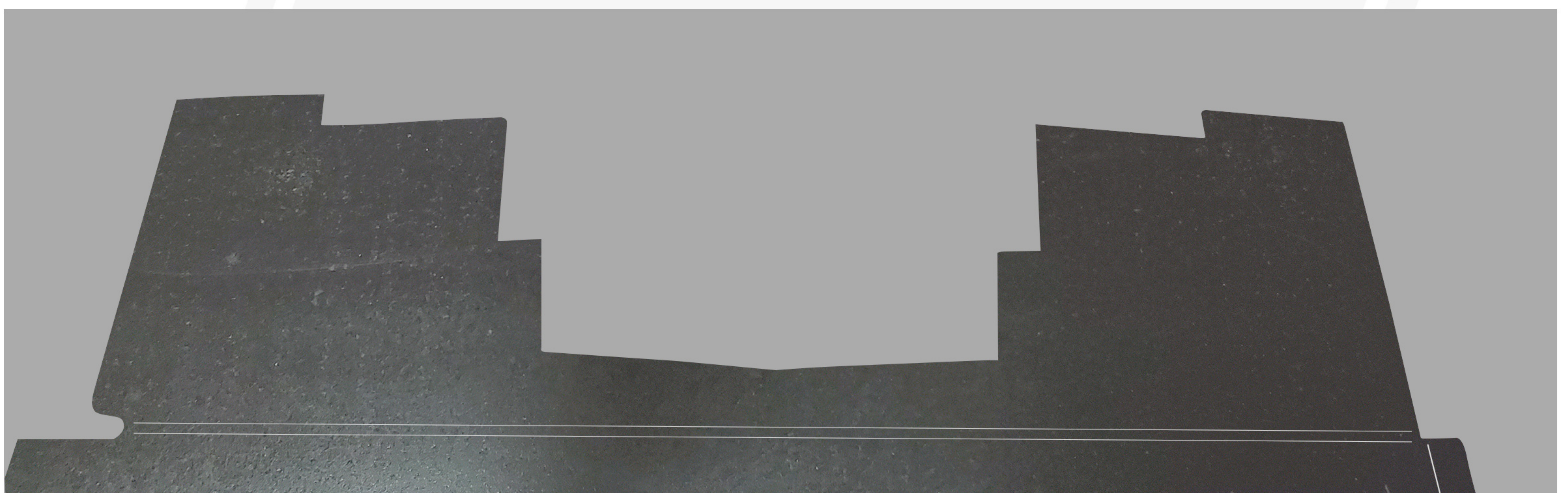
- 3) Check that the measurements on your paper are correct. For example, the bottom of our cut out is 13 1/4" wide. The measurements don't have to be exact, but should be VERY close to accurate. If your measurements are off significantly check your printer configurations and remove any additional margins. Reprint.
- 4) Cut out the paper pattern and keep the side marked with "Trunk Liner". Because of the height of this pattern the middle section can be pretty narrow and flimsy. We chose to fold 2 pieces of paper twice, and then taped them across the bottom of our pattern to add some rigidity to this section.



- 5) Lay the pattern over the top of your trunk liner and trace or lightly score the pattern onto your trunk liner. You will notice that some of the inside edges (pages 2 & 4 on the pattern) will need to be trimmed as the edges do not perfectly align with the trunk liner edge..



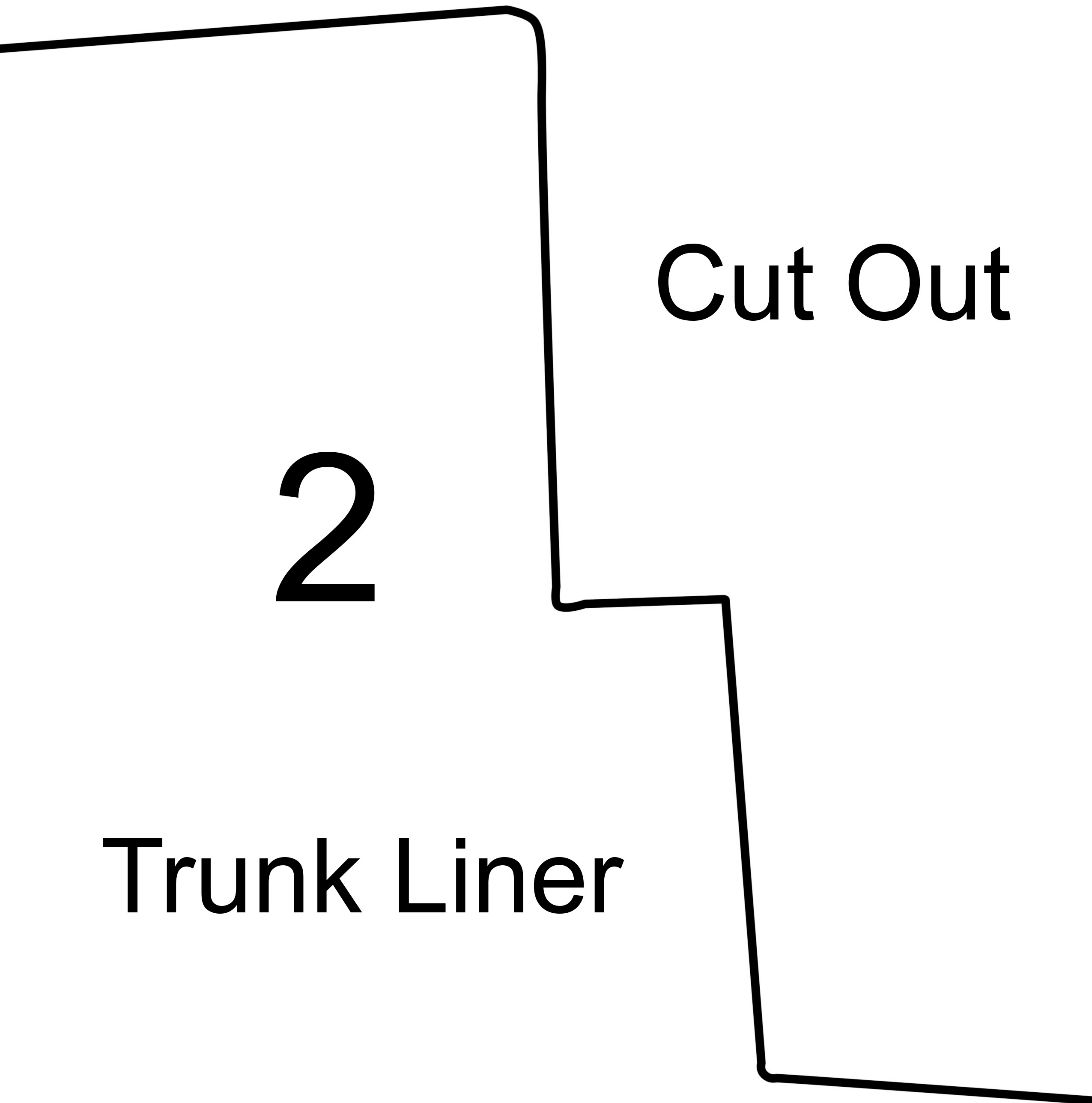
- 6) Cut the traced pattern out from the top of your trunk liner. You should now have a shape similar to the one below.





1

Trunk Liner



2

Cut Out

Trunk Liner

← 16 ³/₄" →

3

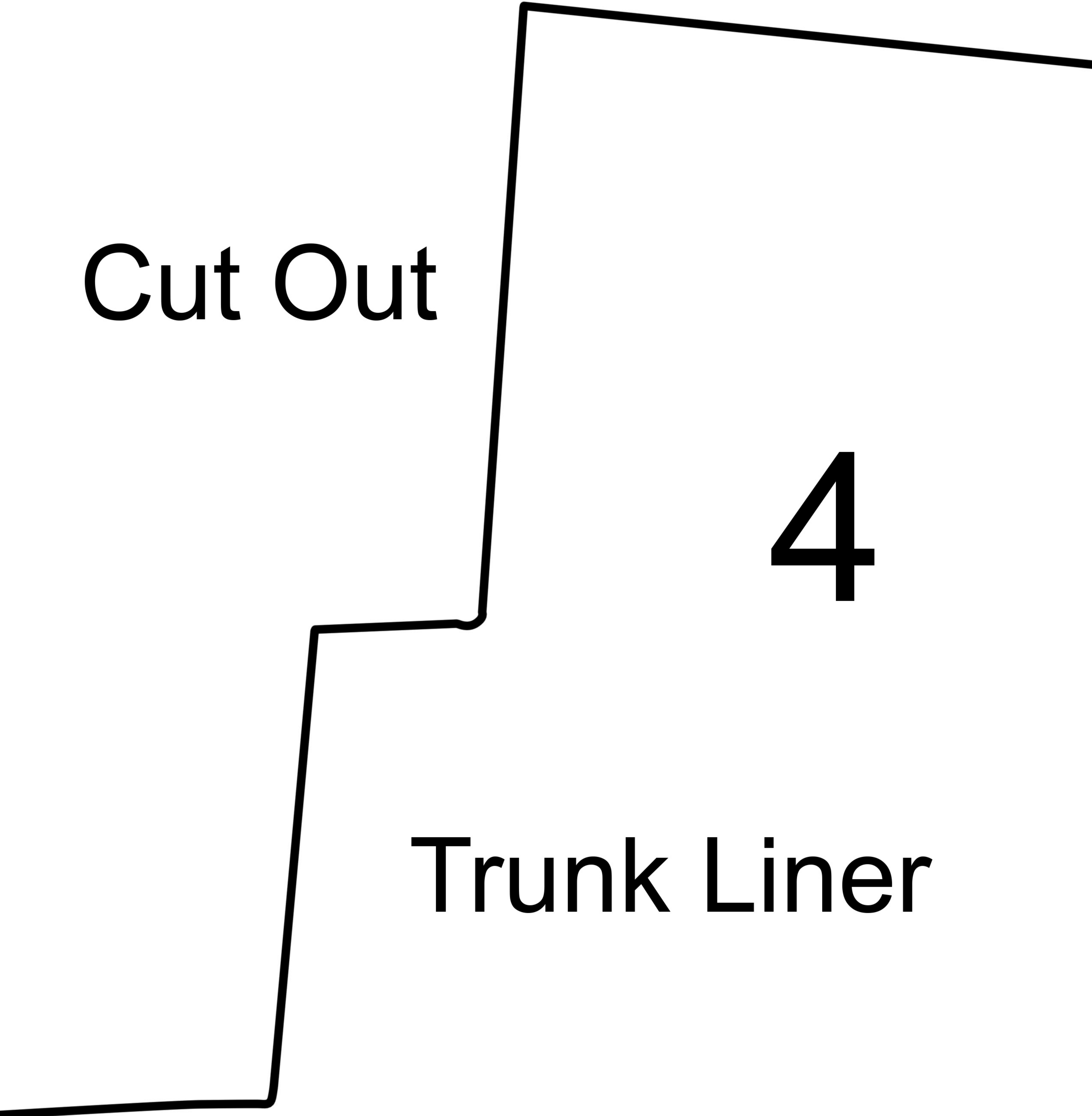
← 16 ¹/₅" →

← 13 ³/₄" →

Cut Out

← 13 ¹/₄" →

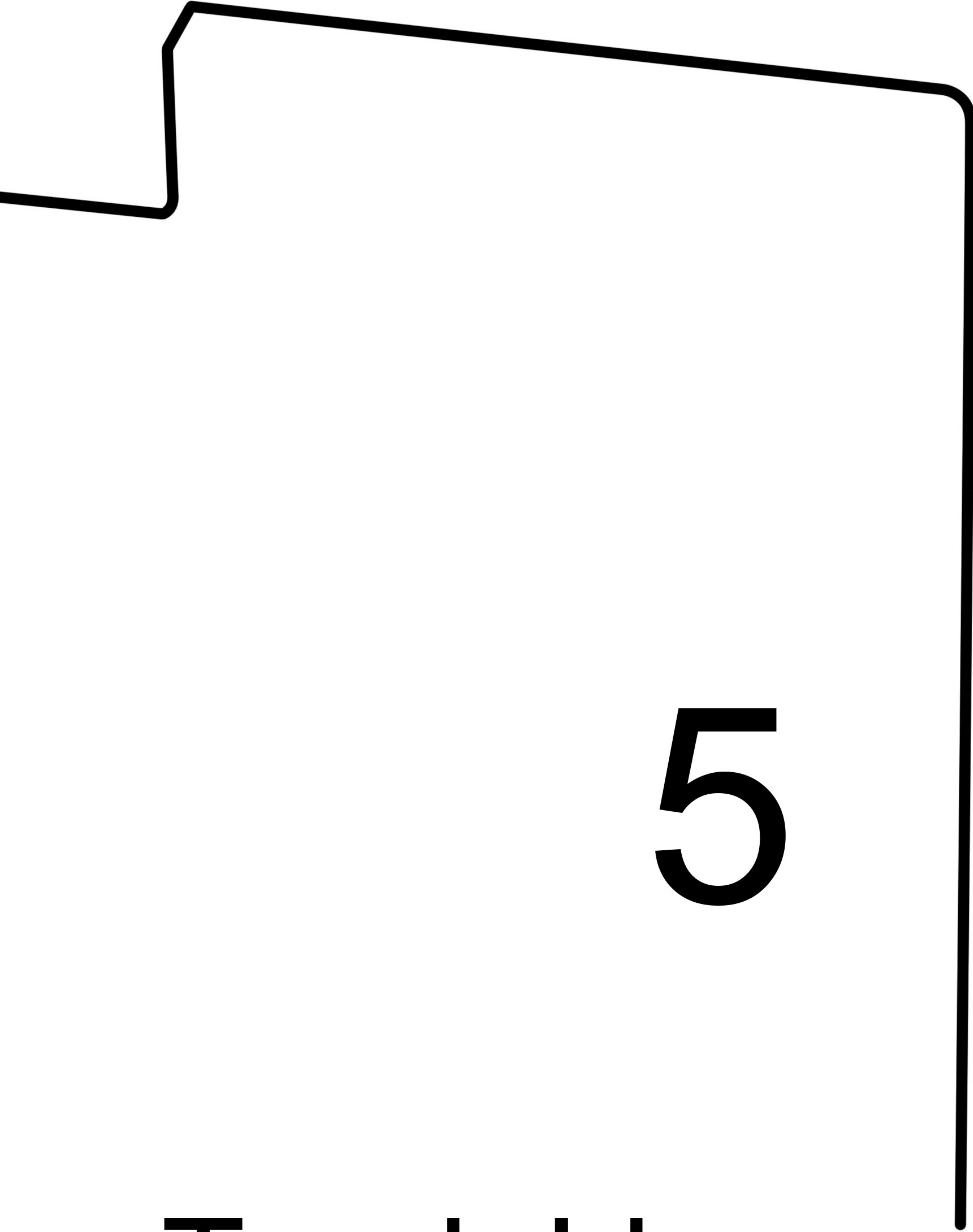




Cut Out

4

Trunk Liner



5

Trunk Liner